

Instructions for Software Use

Step 1 Download App
Download "Smart Life" from App Store or Google Play Store
or Scan the QR code below



App Store



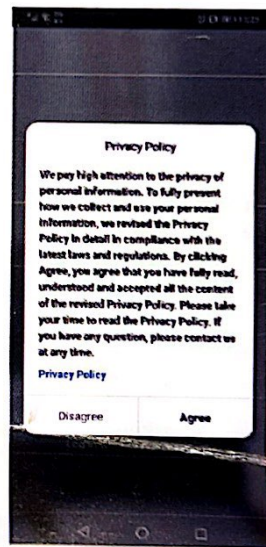
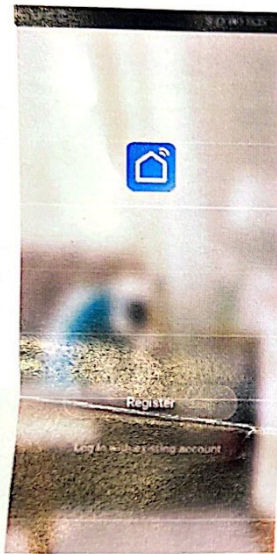
Google play



Step 2 Registration

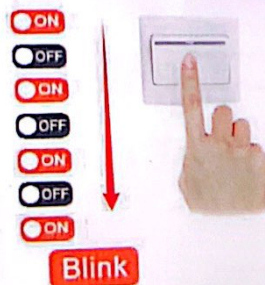
Registration

Tap "Register" and "Agree", follow the instruction and finish registration.



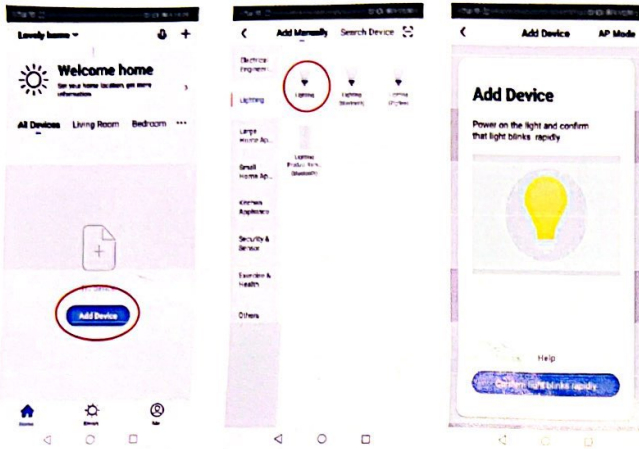
Step 3 Make the light blink

Turn on and turn off the lamp 3 times, then turn on, after 4 seconds, the lamp will blink rapidly.



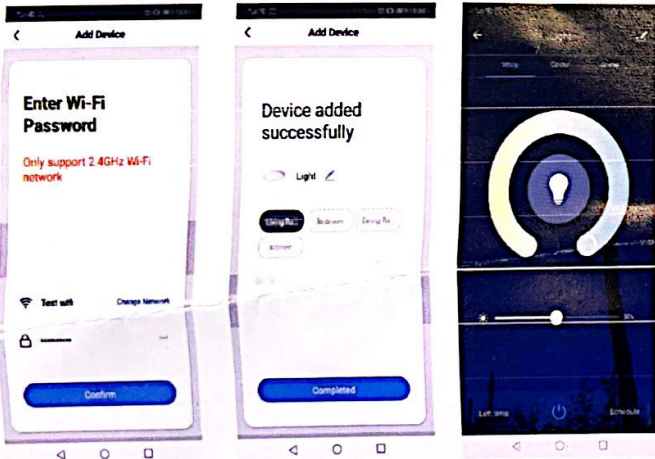
Step 4 Add Devices

Tap "+" in the corner, choose "Lighting" as the following pictures showed.



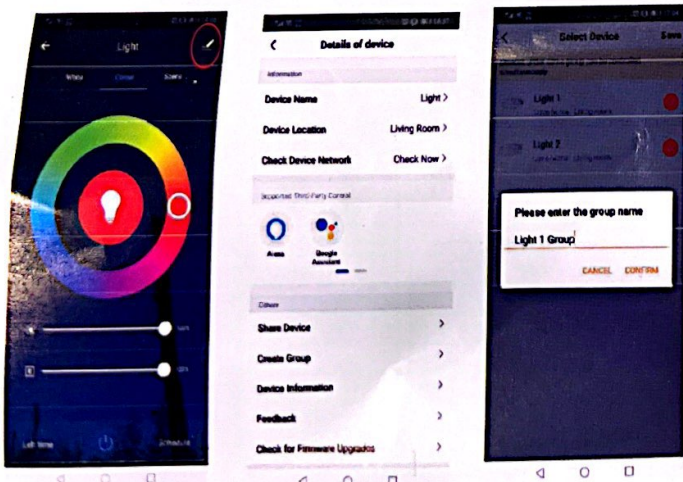
Step 5

Confirm light blinks rapidly Enter Wifi Password Connection finish.



Device detail/other settings

Tap top-right button to view more functions. Such as setting device name, change device location and create group etc.

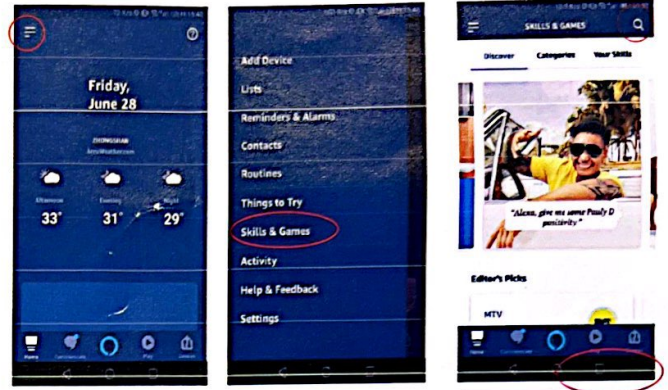


Access to Voice Control Device Echo Dot/Alexa

This smart lamp works with many third-party platforms such as Google Assistant and Amazon Alexa. To configure Amazon Alexa, please refer to Alexa manual. Please download the relevant APP such as Alexa from APP store or Google play.

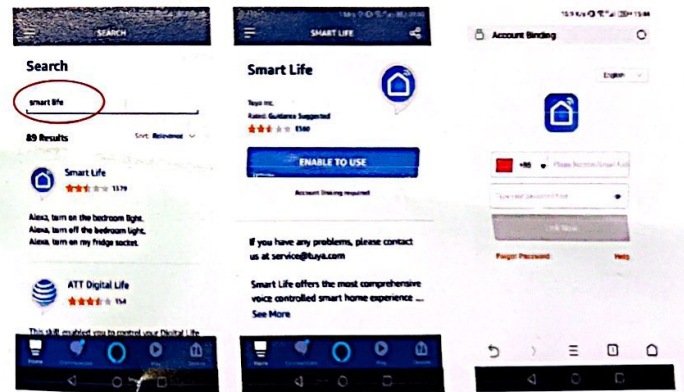
Step 1

Steps to authorize Smart life on Alexa app: Tap on skills & Games, type "Smart life" and search.



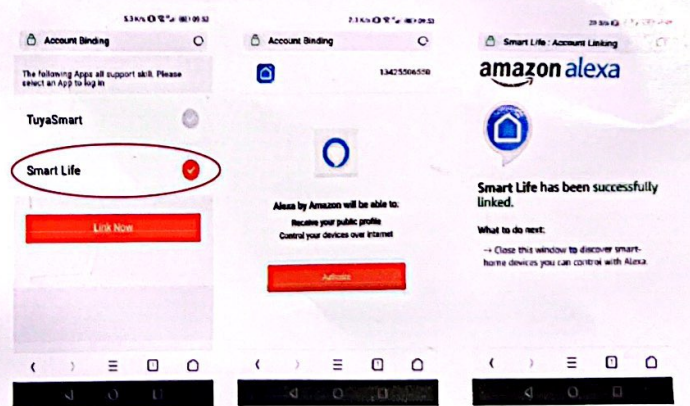
Step 2

Tap ENABLE TO USE, login Smart Life account.



Step 3

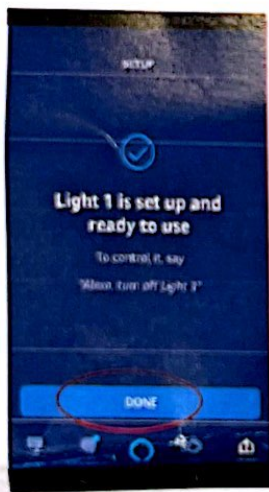
Link Smart Life, Authorize and close this page.



Step 4
Go back Alexa app, tap DISCOVER DEVICES.



Step 5
Set up device, done



Try to speak to alexa:
Alexa, turn on light 1.
Alexa, change light 1 to cool white.
Alexa, set light 1 to warm white.
Alexa, decrease the light 1 to 10 percent brightness.

