

## LED LINEAR HIGH BAY

### PRODUCT DESCRIPTION

The Elakeview LED Linear Highbay provides high lumen efficacy and energy savings to projects in high ceiling applications. This highbay is an excellent energy efficient replacement for HID or fluorescent fixture.



### HIGHLIGHTS

- DLC Premium Listed
- Receptacle for PIR Motion Sensor(Sensor Sold Separately)
- CRI > 80
- AC120-347V Class2 0-10V Dimming Driver, 4/6KV surge protector, w/overtemperature protection
- Efficacy-155LM/W
- 4000K/5000K Selectable
- Mounting V-Hooks provided.
- 5 Year warranty. Extended Warranty Available
- Optional pendant mount
- Wire guard available
- L70 - 50,000 hours.
- Damp location rated



### APPLICATIONS

Designed for manufacturing, industrial, shops, corridor, garage, gymnasium, office, retail and warehouse applications.

ORDERING INFORMATION							
COLOR RENDERING INDEX (CRI)	INPUT VOLTAGE	POWER (W)	EFFICACY (LMW)	DELIVERED LUMENS	CCT(K)	FINISH	SIZE
81	AC120-347V	135/155/185	155	20925-29735	4000/5000	White	1.9FT
81	AC120-347V	78/92/115	155	12012-17365	4000/5000	White	1.4FT
81	AC120-347V	200/230/270	155	30800-40770	4000/5000	White	2.6FT

## LED LINEAR HIGH BAY

### PRODUCT FEATURE

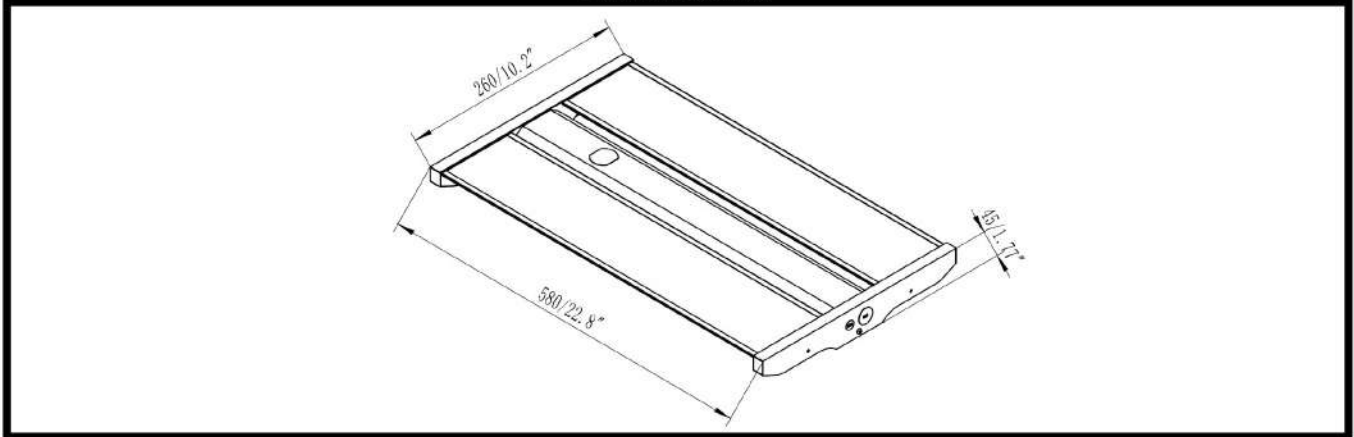
- AC120-347V Class2 0-10V Dimming Driver, 4/6KV surge protector, w/overtemperature protection
- Die formed of 24 gauge cold-rolled steel body. All steel surface are painted after fabrication with high gloss baked white matte power painted.
- 2 x Mounting hooks included.
- Damp Location rated.
- CRI>80
- Tool-Less Hinged bottom LED Driver
- Tool-Less Hinged bottom LED Driver
- High LMW (Lumen per watt) LM80 Approved Seoul LED's
- Receptacle for Microwave Dimming Sensor (Sensor Sold Separately)
- UL/cUL Listed, RoHS Compliant, Design Lights Consortium (DLC) Qualified Products List

**5 years warranty, 100,000hrs Lifespan, Extended warranty terms available**


### PRODUCT SPECIFICATIONS


LED TYPE	WATTS	SYSTEM EFFICACY	LUMENS	COLOR TEMP	BEAM ANGLE	CRI	VOLTAGE	POWER FREQ	POWER EFFICIENCY	POWER FACTOR	THD
SEOUL	135/155/185	155LMW	20925-29735	4000/5000K	120°	>80	120-347V	60HZ	99%	>.90	< 10%

### DIMENSIONS





### MOUNTING OPTIONS

V-Hooks provided 

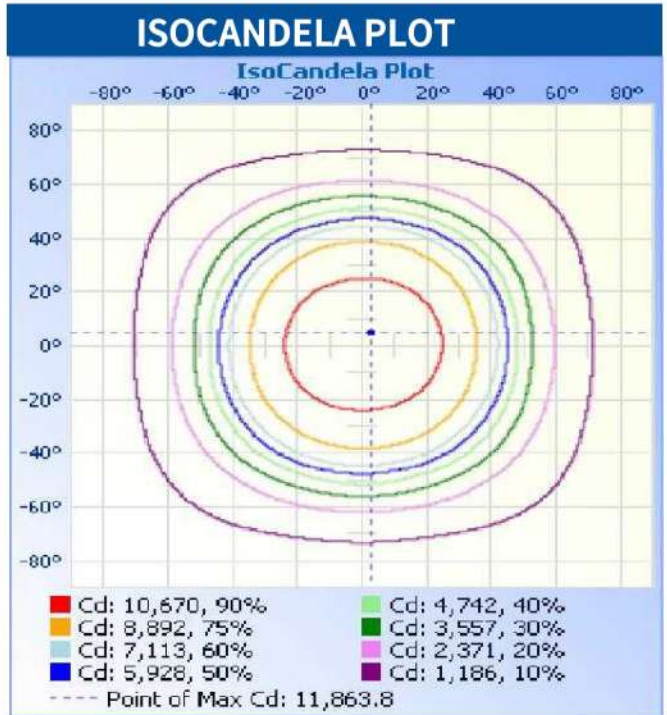
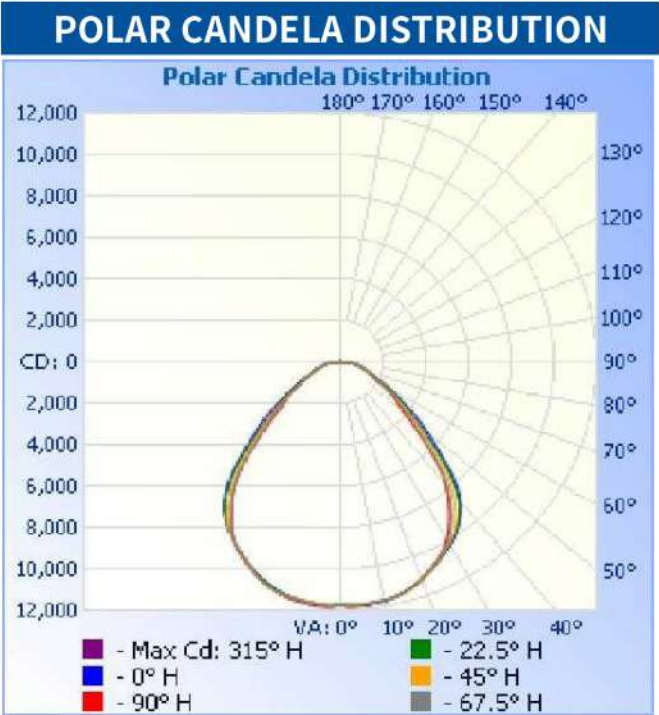
Optional Pendant Mount 

### OPTIONAL ACCESSORIES

 WIREGUARD

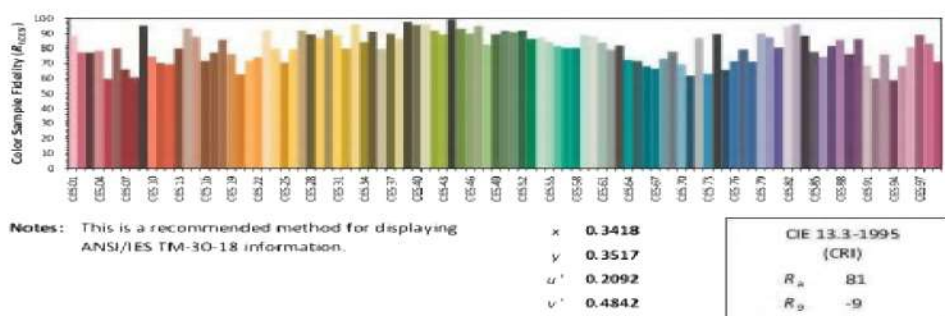
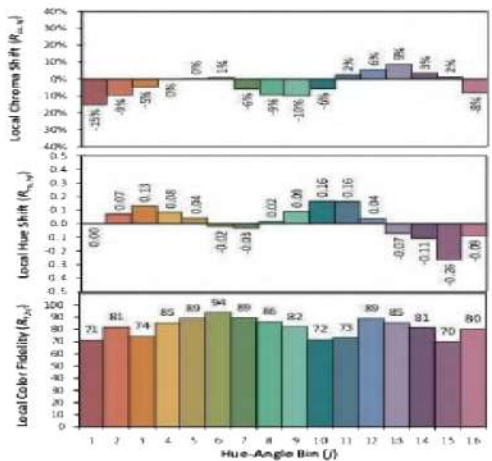
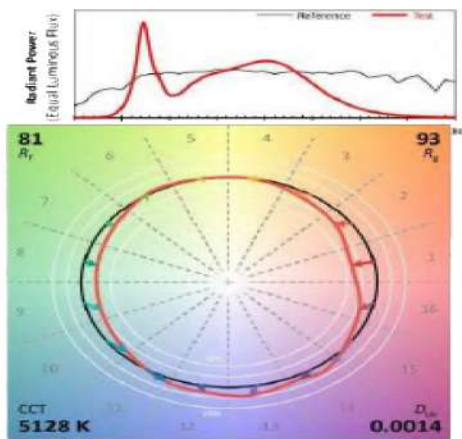
 PIR MOTION SENSOR

## LED LINEAR HIGH BAY



## INTERGRATING SPHERE TEST

ANSI/IES TM-30-18 Color Rendition Report



Colors are for visual orientation purposes only. Created with the ANSI/IES TM 30-18 Calculator Version 2.00.