

LED LINEAR HIGH BAY

PRODUCT DESCRIPTION

The Elakeview LED Linear Highbay provides high lumen efficacy and energy savings to projects in high ceiling applications. This highbay is an excellent energy efficient replacement for HID or fluorescent fixture.



HIGHLIGHTS

- DLC Premium Listed
- Wire guard available
- AC120-347V Class2 0-10V Dimming Driver, 4/6KV surge protector, w/overtemperature protection
- Damp location rated
- L70 - 100,000 hours
- CRI > 80
- 4000K/5000K Selectable
- Mounting V-Hooks provided
- 200/230/270W Selectable
- Optional pendant mount
- Efficacy-155LM/W
- 5 Year warranty. Extended Warranty Available
- Receptacle for Microwave Dimming Sensor (Sensor Sold Separately)



APPLICATIONS

Designed for manufacturing, industrial, shops, corridor, garage, gymnasium, office, retail and warehouse applications.

ORDERING INFORMATION							
COLOR RENDERING INDEX (CRI)	INPUT VOLTAGE	POWER (W)	EFFICACY (LMW)	DELIVERED LUMENS	CCT(K)	FINISH	SIZE
81	AC120-347V	200/230/270	155	30800-40770	4000/5000	White	2.6FT
81	AC120-347V	135/155/185	155	20925-29735	4000/5000	White	1.9FT
81	AC120-347V	78/92/115	155	12090-17365	4000/5000	White	1.4FT

LED LINEAR HIGH BAY

PRODUCT FEATURE

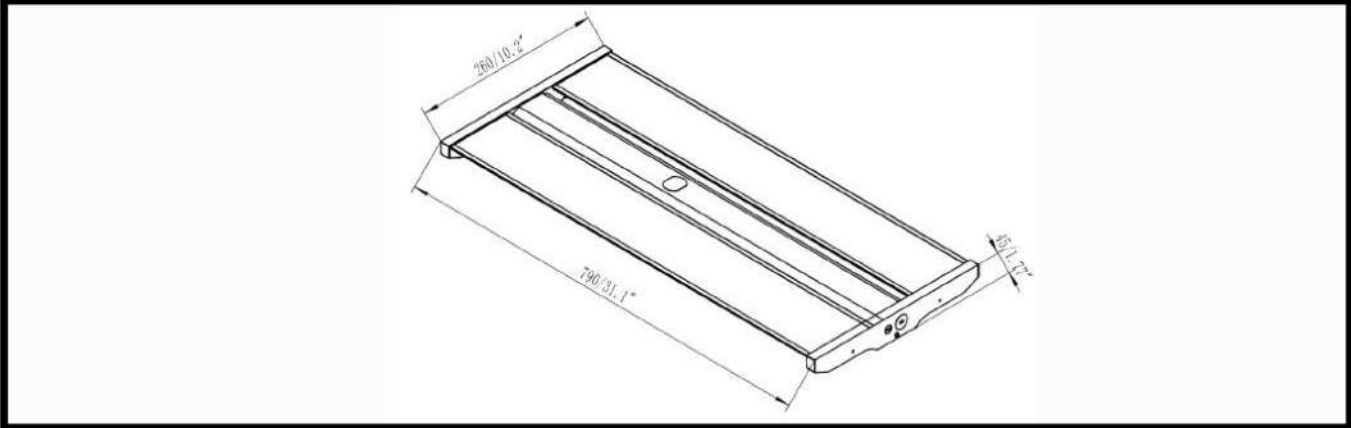
- AC120-347V Class2 0-10V Dimming Driver, 4/6KV surge protector, w/overtemperature protection
- Tool-Less Hinged bottom LED Driver
- High transmission opaque acrylic lens.
- Receptacle for Microwave Dimming Sensor (Sensor Sold Separately)
- High LMW (Lumen per watt) LM80 Approved Seoul LED's
- Damp Location rated.
- CRI>80
- Die formed of 24 gauge cold-rolled steel body.
- All steel surface are painted after fabrication with high gloss baked white matte power painted.
- 2 x Mounting hooks included.
- UL/cUL Listed, RoHS Compliant, Design Lights Consortium (DLC) Qualified Products List

• 5 years warranty, 100,000hrs Lifespan, Extended warranty terms available


PRODUCT SPECIFICATIONS


LED TYPE	WATTS	SYSTEM EFFICACY	LUMENS	COLOR TEMP	BEAM ANGLE	CRI	VOLTAGE	POWER FREQ	POWER EFFICIENCY	POWER FACTOR	THD
SEOUL	200/230/270W	155LMW	30800-40770	4000/5000K	120°	>80	120-347V	60HZ	99%	>.90	< 10%

DIMENSIONS

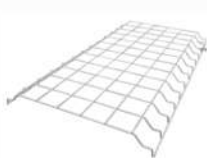



MOUNTING OPTIONS

V-Hooks provided 

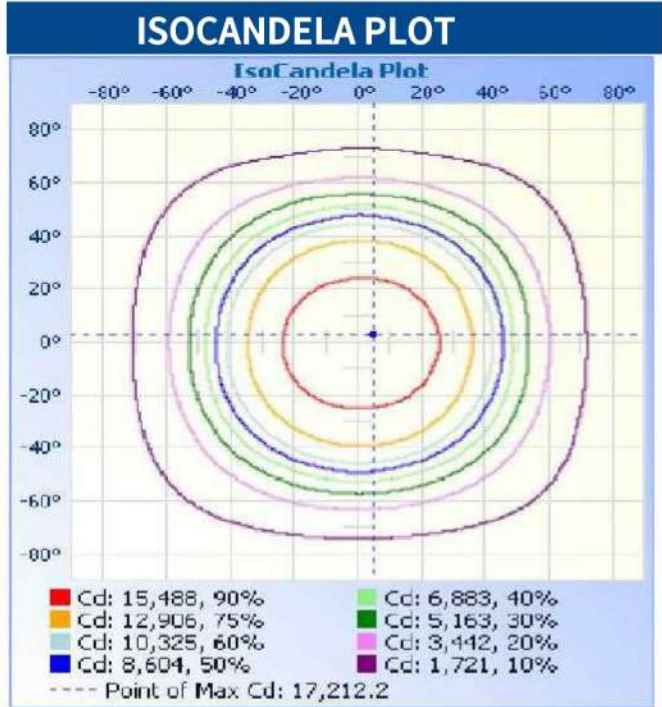
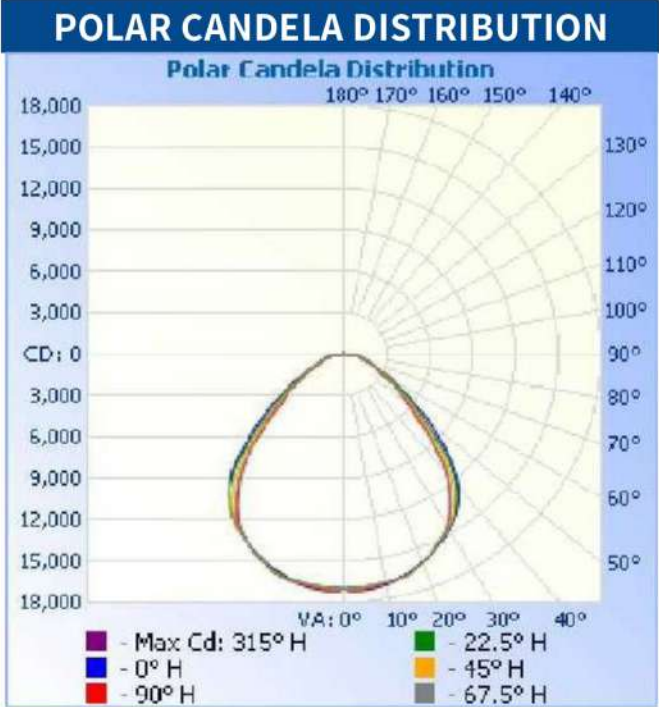
Optional Pendant Mount 

OPTIONAL ACCESSORIES

 WIREGUARD

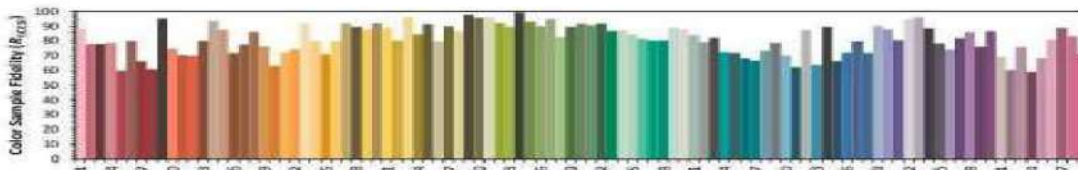
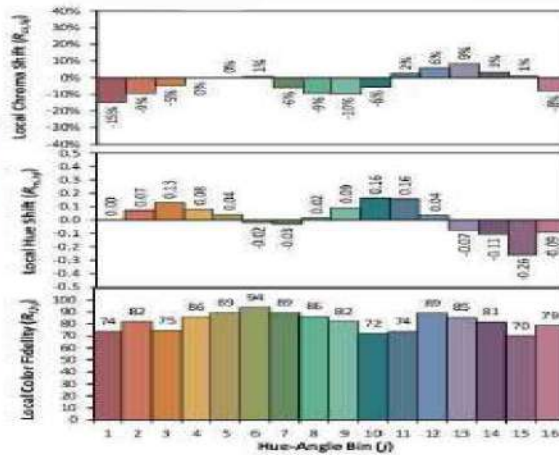
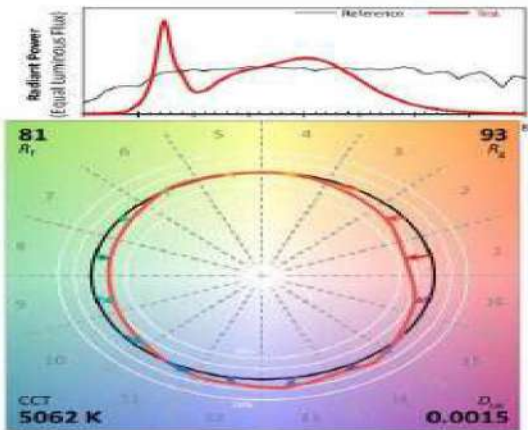
 Microwave Dimming Sensor

LED LINEAR HIGH BAY



INTERGRATING SPHERE TEST

ANSI/IES TM-30-18 Color Rendition Report



Notes: This is a recommended method for displaying ANSI/IES TM-30-18 information.

x 0.3436
y 0.3534
u' 0.2097
v' 0.4853

CIE 13.3-1995 (CRI)
 R_a 81
 R_s -9

Colors are for visual orientation purposes only. Created with the ANSI/IES TM-30-18 Calculator Version 2.00.