



READ AND SAVE THESE INSTRUCTIONS!
INSTALLATION INSTRUCTIONS

Bathroom Exhaust Fan

SUITABLE FOR USE OVER TUB OR SHOWER ENCLOSURE WHEN INSTALLED IN A GFCI PROTECTED BRANCH CIRCUIT. THIS PRODUCT MUST BE INSTALLED BY A QUALIFIED TECHNICIAN.

- Do not mount in a ceiling thermally insulated to a value greater than R40.
- Designed to be mounted in the ceiling.
- **WARNING:** to reduce the risk of fire or electric shock, do not use this fan with any solid-state speed control device.
- **WARNING:** to reduce the risk of electric shock, disconnect power before servicing.
- **NOTE:** not for use in kitchens. (Refer to Figure 1)

IMPORTANT SAFETY INSTRUCTIONS

WARNING: TO REDUCE THE RISK OF FIRE, ELECTRIC SHOCK, OR INJURY TO PERSONS, OBSERVE THE FOLLOWING:

1. Use this unit in the manner intended by the manufacturer. If you have questions, contact the manufacturer.
2. Before servicing or cleaning unit, switch power off at service panel and lock service panel to prevent power from being switched on accidentally. When the service disconnecting means cannot be locked, securely fasten a prominent warning device, such as a tag, to the service panel.

CAUTION: Fan is for general ventilating use only. Do not use to exhaust hazardous or explosive materials and vapors.

INSTALLATION INSTRUCTIONS

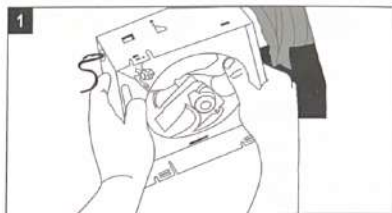
WARNING: TO REDUCE THE RISK OF FIRE, ELECTRIC SHOCK, OR INJURY TO PERSONS, OBSERVE THE FOLLOWING:

1. Installation work and electrical wiring must be done by qualified persons in accordance with all applicable codes and standard, including fire-rated construction.
2. Sufficient air is needed for proper combustion and exhausting of gases through the flue (chimney) of fuel burning-equipment to prevent back-drafting. Follow the heating equipment manufacturer's guideline and safety standards such as those published by the local code authorities.
3. When cutting or drilling into wall or ceiling, do not damage electrical wiring and other hidden utility.

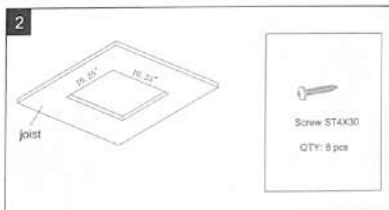
- Ducted fans must always vent to the outdoors.
- If unit is to be installed over a tub or shower, it must be marked as appropriate for the application and be connected to a GFCI (ground fault circuit interrupter) protected branch circuit.
- Never place a switch where it can be reached from a tub or shower.

INSTALLATION OF HOUSING

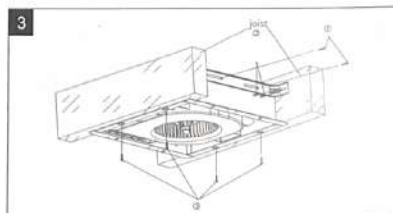
- Remove existing fan.



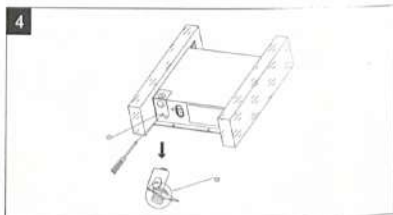
- Cut the ceiling as to the size of housing, and put out the screws bag



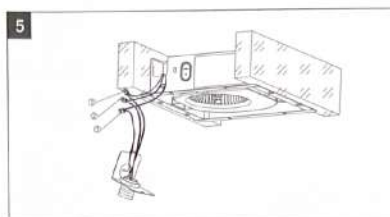
- Measure the distance from the slot to the joist, and fix the bracket to the housing with 2pcs Screws ST4X30. Fix the bracket to one side of joist with 2pcs Screws ST4X30. Fix the bracket to bottom of joist with 4pcs Screws ST4X30.



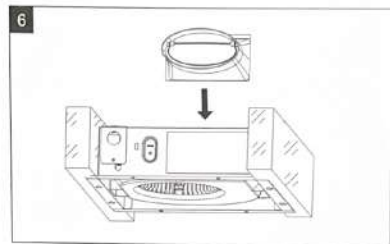
- Loosen the screw and get the L-square. Install power duct on the L-square



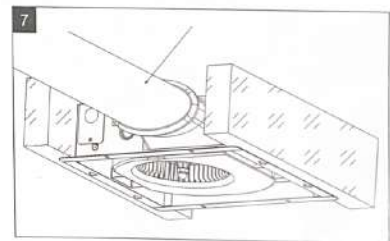
5. Green wire connect with ground wire
Black wire connect with live wire
White wire connect with zero wire



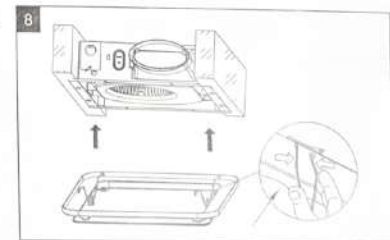
6. Slide duct adaptor to install onto the housing.
Tear the sticker on the duct adaptor.



7. Install the duct with duct adaptor



8. Press the spring and put into the proper location in the housing



WIRING

IMPORTANT: The power to your bathroom exhaust fan must be disconnected before installation begins.

IMPORTANT: Be certain all wiring complies with local codes and that the fan unit is properly grounded.

1. Run power leads from the wall switch, or time switch to the unit.
2. Using the approved wire connectors, connect supply wires to fan wires: black to black (live) and white to white (neutral). Connect ground wire (green) to the ground connection in the fan's junction box.

SPECIFICATIONS

| Model No. | Air direction | V | Hz | Duct * diameter (inch) | Noise * (sones) | Motor | Power consumption * (W) | Air deliver * CFM |
|-----------|---------------|-----|----|------------------------------|--------------------|-------|----------------------------|----------------------|
| BPT18C-TS | Exhaust | 120 | 60 | 4" Oval | <1.0 | DC | 6/9/14 | 50/80/100 |

* Static pressure at 0.1 inches of water.

Specifications are based on HVI standard.